



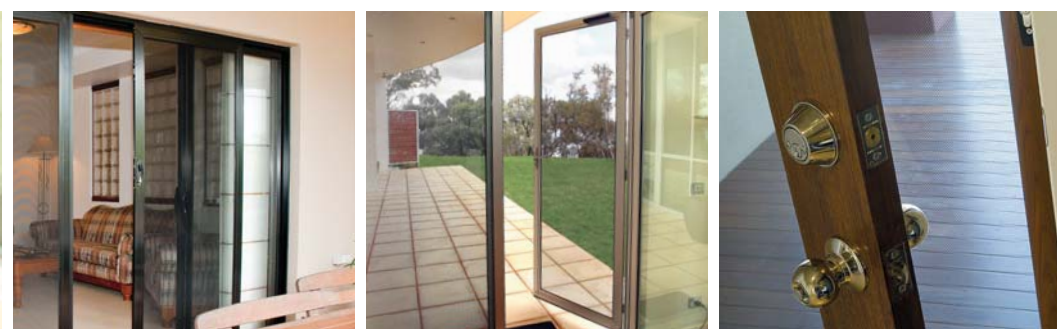
**Feel
safe
inside.**



This area is trimmed off



SUPASCREENTM



Feel
safe
inside.

Lets the fresh air in but that's all.

SupaScreen™ offers the comfort of fresh air flowing through your home allowing you to enjoy the clear and unobstructed views of the outdoors.

The strength and durability of SupaScreen™ security doors and window screens offer the peace of mind that comes from knowing your family and home are secure.

Made from high tensile, stainless steel woven into a fine mesh, SupaScreen™ is the very latest innovation in security products technology. It maximises strength and durability, whilst providing a welcoming entrance to your home.

SupaScreen™ is assembled using a unique patented pressure process that eliminates the need for screws, rivets, pins or snap ins. The process ensures that no metal surfaces come into contact with each other, eliminating the possibility of corrosion.

SupaScreen™ is covered by a ten year warranty.



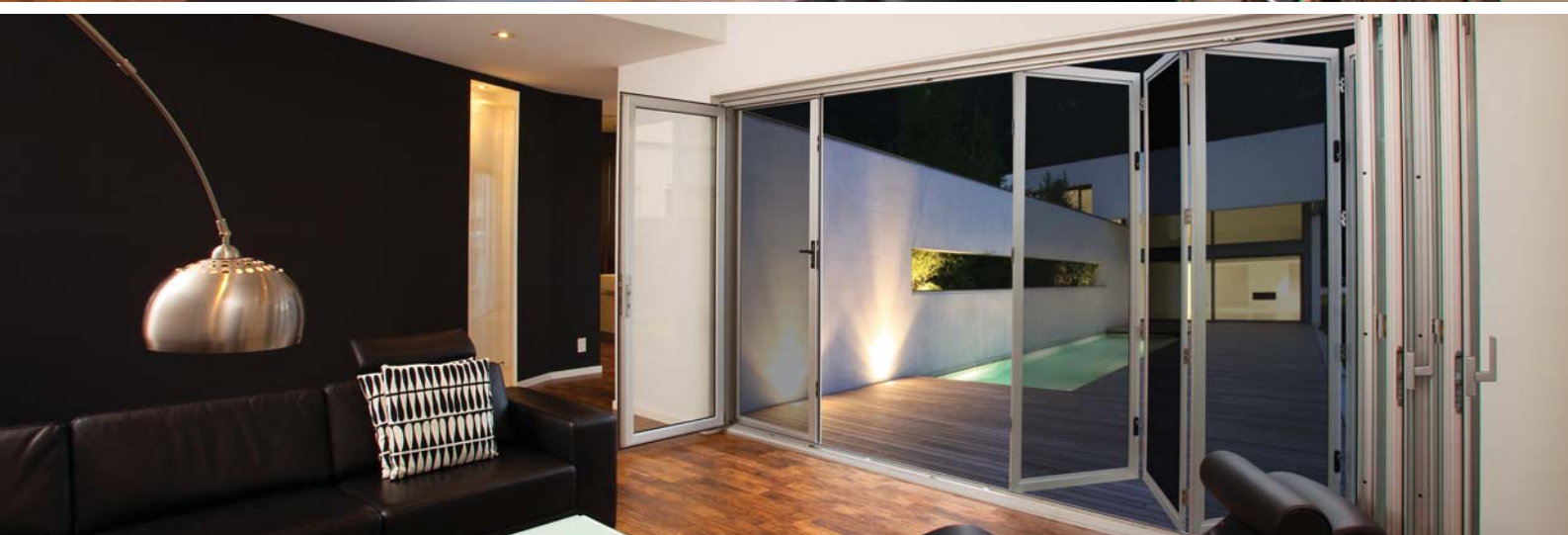


Innovative design that offers comfort and security



The SupaScreen™ folding door by Amplimesh is a revolutionary new product that offers all the comfort of a traditional SupaScreen™ product, though capable of securing large openings including existing glass folding doors and patio enclosures. With a tested and proven security standards report AS5041-2003 & AS5039-2008, you will feel safe inside. Enjoy Australia's first ever security folding door, whilst enjoying insect free comfort, security and breeze in your alfresco area.

This purpose designed system will not compromise with unobtrusive views caused by traditional security doors. It can be retrofitted to existing glass folding doors or installed as a stand alone security or patio enclosure, protecting your valuable



outdoor and leisure items. The suite incorporates the patented stainless steel mesh system and a new heavy duty security frame for improved strength. The multiple panel system can be configured to open in or out and will span heights up to 2.4 metres and widths up to 6.5 metres (8 panels).

The stainless steel hinge design has been developed to provide streamlined aesthetics, allowing the panels to stack side-by-side when open. An exclusively designed flush bolt enables the door panels to be closed securely. The installation height of the Flush Bolt can vary to allow the operational knob to be easily reached by the shortest of users.

SUPASCREEN™

Breakthrough protection for your family and home

As more and more households are becoming victim to attempted break-ins, you can't go past SecuraMesh™. And while the chance of burglary is extremely high, you can spare yourself the trauma of having your personal property invaded by installing superior Amplimesh products.

Protect your home and family with quality SecuraMesh™ grille security doors and window screens, that provide a visual deterrent and effective protection against uninvited guests entering your home. SecuraMesh's variety of grille designs and frames suit the demands for barrier to security doors.

SecuraMesh™ security grilles are available in a variety of styles and powdercoat colours to suit your home décor requirements.

Look-Out™ Restricted Vision Screens

For further peace of mind, Look-Out™ enables you to see visitors before they can see you. As our motto suggests, Look-Out™ is the screen where nobody else gets a look in.

Microtech™ Insect Screens

Normal insect screens are designed to keep out flies and mozzies, but they're simply not strong enough to withstand the day to day damage that domestic pets or children can cause. Microtech™ is highly durable aluminium, and therefore is an ideal and cost effective flyscreen for your family.



Grille Design 122



Grille Design 125



Grille Design 127



Grille Design 133



Your safety checklist

As the season approaches for you to enjoy the fresh breeze, there are some measures you can take to secure your home and feel safe inside.

- Fit Amplimesh SupaScreen or SecuraMesh screens to all accessible windows
- Fit Amplimesh SupaScreen or SecuraMesh screen to entrance, sliding and patio doors
- Fit key-operated deadlocks to external hinged doors
- Fit key-operated patio bolts to all external sliding doors

SECURAMESH™



Spring loaded release handles

Hard to break in, easy to break out

Feel safe, even in emergency situations. The SupaScape™ fire escape system has been designed and tested to prevent unwanted visitors from entering your home via the windows, but provides you and your family with an easy escape path in the event of a fire or other critical situations that may arise in your home.

The SupaScape fire escape system is a window screen that comes with an open outward capability or with sliding functionality to allow for easy exit in the event of an emergency.

The slim-line keyless design is available in stainless steel mesh and aluminium grille and also has a simplistic but effective child safety opening release that avoids accidental disengaging. All SupaScape systems are designed allowing you to gain access to the glass for easy cleaning.



The SupaScape fire escape system has an outward opening functionality. Top Hung option shown.



Spring loaded release handle allowing rapid operation in urgent situations



Top Hung



Side Hung



Sliding

SUPASCAPE™



History

Amplimesh® was originally promoted in the 1970s and the name is recognised by many as being the best in aluminium and stainless steel security systems. It's easy to see why over the last 30 years, more than a million Australians have chosen Amplimesh to secure their homes.

Amplimesh security doors and window screens are clearly Australia's first choice in keeping homes safe and secure.

Care and Maintenance

The finishes that are applied to Amplimesh products are of the highest quality and are extremely durable and weather resistant. Like all fixtures around the home some maintenance is required to preserve the original appearance of the product.

Australian Standards

Amplimesh Security Products are rigorously tested to ensure they meet all relevant Australian and Industry Standards including:

SECURITY



Australian Standard AS5039-2008 & AS5041-2003 – Security Testing

Amplimesh products are subjected to a rigorous regime of impact tests, jemmy attacks and pull testing under this standard, to ensure that the inherent strength and structural integrity of the manufactured security product is maintained.



Australian Standard AS5039-2008 & AS5041-2003 – Grille Shear Test

Securamesh Grilles are tested for material hardness under this standard, to ensure the force required to sever the cords of Securamesh grilles meet or exceed the requirements of the standard.



Australian Standard AS5039-2008 & AS5041-2003 – Knife Shear Test

Supascreen Stainless Steel meshes are tested for material hardness and tensile strength by subjecting the mesh to a standardised physical cutting attack, which draws a knife over the mesh a number of times.

FIRE



Australian Standard AS1530.4-2005, Appendix B7 – Fire Attenuation Test

Supascreen Stainless Steel Security products have been tested in general accordance with this standard and when exposed to incident radiant heat Supascreen achieves a 41% reduction in the radiant heat flux between the inside and outside of the product.



Australian Standard AS1530.8.1-2007 – Bushfire Test

Supascreen Stainless Steel Security products have been tested under this standard and satisfied the requirements for Bushfire Attack Level (BAL) 40.

CYCLONIC



Australian Standard AS1170.2-2002, Clause 5.3.2 – Cyclonic Missile Impacts

In cyclonic regions windows and doors may need to be protected from flying debris, Supascreen Stainless Steel Security products have been tested to this standard, resisting the 4kg, 100mm x 50mm timber travelling at 15m/s.



Australian Standard AS1170.2-1989 – Cyclonic Missile Impacts

QLD Government, Design Guidelines for Aust. Public Cyclone Shelters, 2002. Department of Health, Western Australia Health Facility Guidelines for Engineering Services, 2006. Supascreen Stainless Steel Security products have also been tested to and satisfied the more onerous testing regime of this Standard. The same piece of timber is impacted into the screen at the faster speed of 20m/s followed by 8mm Steel balls at 30m/s followed by fatigue testing.

SUPASCREEN

10 YEAR WARRANTY

Amplimesh®, Supascreen™, SecuraMesh™, SupaScape™, Look-Out™ and Microtech™ are trademarks of Capral Limited.

Amplimesh® Security Products are sold through a network of authorised Amplimesh dealers managed by Capral Limited.

ABN 78 004 213 692.

Contact your local authorised Amplimesh dealer

1800 267 546

www.amplimesh.com.au